



CANADIAN  
WILDLIFE HEALTH  
COOPERATIVE



**Creating a world  
that is safe and sustainable  
for wildlife and society**

Photo: Jordi Segers

## Canada's Wildlife Health Program

### WHAT we do

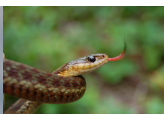
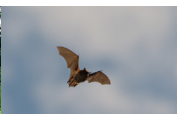
We promote and protect the health of wildlife and Canadians through leadership, partnership, investigation and action.

The Canadian Wildlife Health Cooperative (CWHC) is a “one-stop shop” that provides a Canada-wide perspective on wildlife health;

- Leading wildlife health strategies and programs
- Tracking wildlife health to know when to act
- Detecting emergence of new diseases
- Impacting policy and management decisions

The CWHC strives to be impactful and relevant in a rapidly changing world, supporting:

- Food safety and food security
- Public health and well-being
- Agriculture and the bio-economy
- Training wildlife health professionals
- Advocacy for wildlife health issues



CANADIAN  
WILDLIFE HEALTH  
COOPERATIVE

[cwhc-rcsf.ca](http://cwhc-rcsf.ca)



Photo: Jordi Segers

## CONTACT US

CWHC Atlantic  
Atlantic Veterinary College  
Charlottetown, PEI C1A 4P3  
902.628.4314  
atlantic@cwhc-rcsf.ca

## FOLLOW US ONLINE

[www.healthywildlife.ca](http://www.healthywildlife.ca)  
[www.facebook.com/cwhcrsf](https://www.facebook.com/cwhcrsf)  
@cwhcrsf on Twitter

# CANADA NEEDS A WILDLIFE HEALTH PROGRAM

## Did you know?

- Wild animals are integral to our economic well-being
- Interactions between wild animals and agriculture affect international trade and our food production
- Diseases shared between wild animals, domestic animals and/or people have the potential to adversely affect health

## The CWHC provides:

- Surveillance for wildlife diseases & targeted programs for Avian Influenza, West Nile Virus, White-nose Syndrome and Rabies.
- Discovering new diseases and investigating new approaches to wildlife health issues through research and risk assessments
- Advocating for wildlife health and developing strategies to confront the effects of climate change and cumulative effects on wild animals.

## YOU CAN HELP!

SUBMIT OR REPORT WILDLIFE

[cwhc-rcsf.ca/report](http://cwhc-rcsf.ca/report)

DONATE

[cwhc-rcsf.ca/donate](http://cwhc-rcsf.ca/donate)



CANADIAN  
WILDLIFE HEALTH  
COOPERATIVE

[cwhc-rcsf.ca](http://cwhc-rcsf.ca)